

---

# FENWICK SOLAR FARM

**Fenwick Solar Farm**  
**EN010152**

**Location Plan**

**Document Reference: EN010152/APP/2.5**

Regulation Reg 5(2)(o)

Infrastructure Planning (Applications: Prescribed Forms and Procedure)  
Regulations 2009

October 2024  
Revision Number: 00

## Revision History

<b>Revision Number</b>	<b>Date</b>	<b>Details</b>
00	October 2024	DCO application

Prepared for:  
Fenwick Solar Project Limited

Prepared by:  
AECOM Limited

© 2024 AECOM Limited. All Rights Reserved.

This document has been prepared by AECOM Limited (“AECOM”) for sole use of our client (the “Client”) in accordance with generally accepted consultancy principles, the budget for fees and the terms of reference agreed between AECOM and the Client. Any information provided by third parties and referred to herein has not been checked or verified by AECOM, unless otherwise expressly stated in the document. No third party may rely upon this document without the prior and express written agreement of AECOM.



**PROJECT**

Fenwick Solar Farm

**CLIENT**

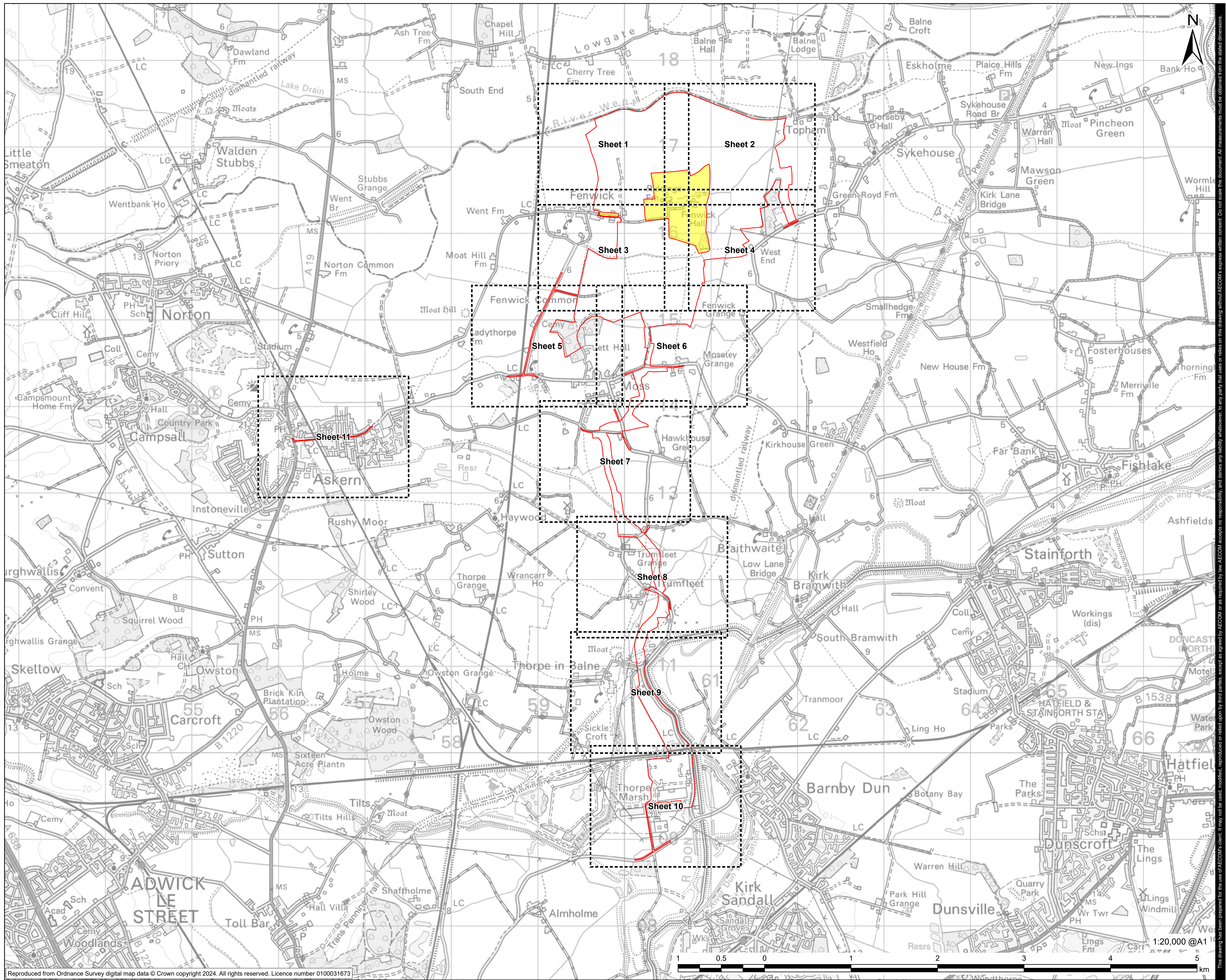
Fenwick Solar Project Limited

**CONSULTANT**

AECOM Limited  
Midpoint  
Alencon Link  
Basingstoke, RG21 7PP  
www.aecom.com

**LEGEND**

- Order limits
- Land not included in the Order limits
- Sheet Extent with Reference to Sheet Number



FOR DCO APPLICATION			
CL	AK	DATE	REV
		25/09/2024	0
REVISION DETAILS			

**ISSUE PURPOSE**

DCO Application

**PROJECT NUMBER**

60698207

**PLAN TITLE**

Works Plan Sheet Extents

**REFERENCE NUMBER**

EN010152/APP/2.2

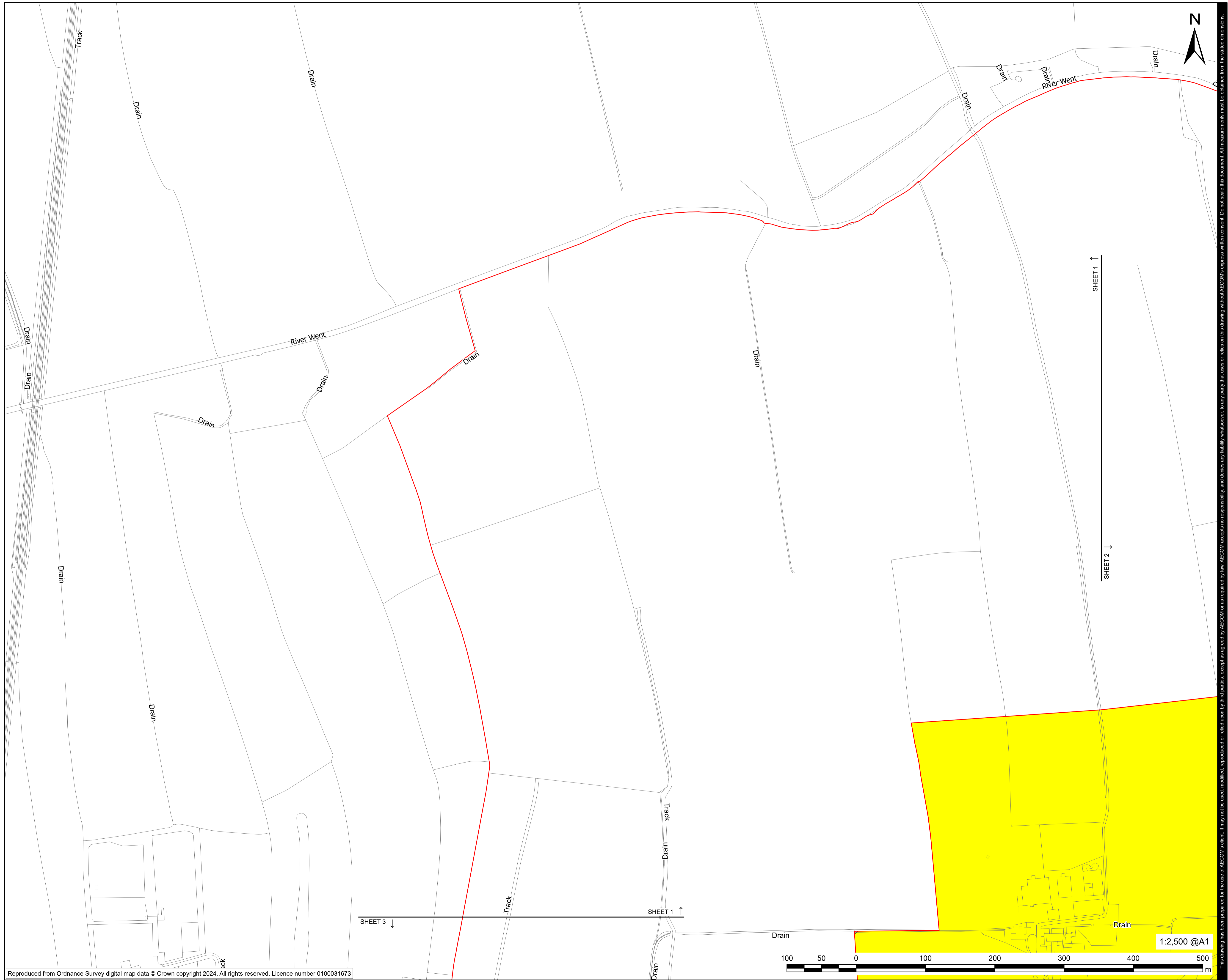
**LEGISLATION REFERENCE**

APFP 2009 Regulation 5(2)(j)

This drawing has been prepared for the use of AECOM's client. It may not be used, modified, reproduced or relied upon by third parties, except as required by law. AECOM accepts no responsibility, and denies any liability whatsoever, to any party that uses or relies on this drawing without AECOM's express written consent. Do not scale this document. All measurements must be obtained from the stated dimensions.

ISO A1 594mm x 841mm  
Revision: 0 Drawn: MAB Checked: JW Approved: MS Date: 2024-10-22  
Filename: I:\5004 - Information Systems\60698207\_Fenwick\_Solar\_Plans\2\DCO\_Doc\_2\_2\_Works\_Plans\2\DCO\_Doc\_2\_2\_EN010152\_Works\_Plans\_v6\_A1\_20241010\_R0.aprx





Reproduced from Ordnance Survey digital map data © Crown copyright 2024. All rights reserved. Licence number 0100031673

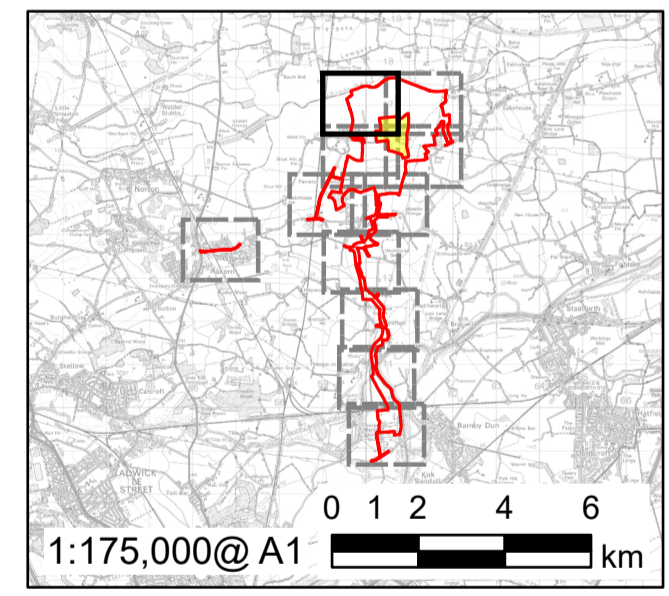
**PROJECT**  
 Fenwick Solar Farm

**CLIENT**  
 Fenwick Solar Project Limited

**CONSULTANT**  
 AECOM Limited  
 Midpoint  
 Alencon Link  
 Basingstoke, RG21 7PP  
 www.aecom.com

**LEGEND**

- Order limits
- Land not included in the Order limits



FOR DCO APPLICATION	AK	JW	24/09/2024	0
REVISION DETAILS	BY	CHECK	DATE	REV

**ISSUE PURPOSE**  
 DCO Application

**PROJECT NUMBER**  
 60698207

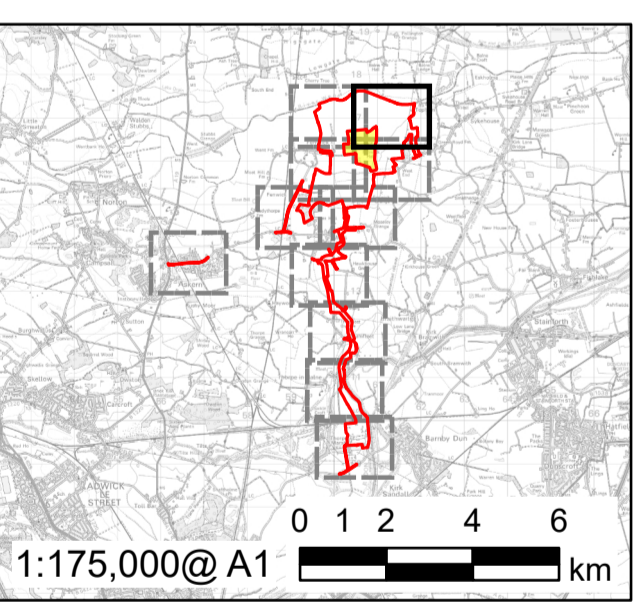
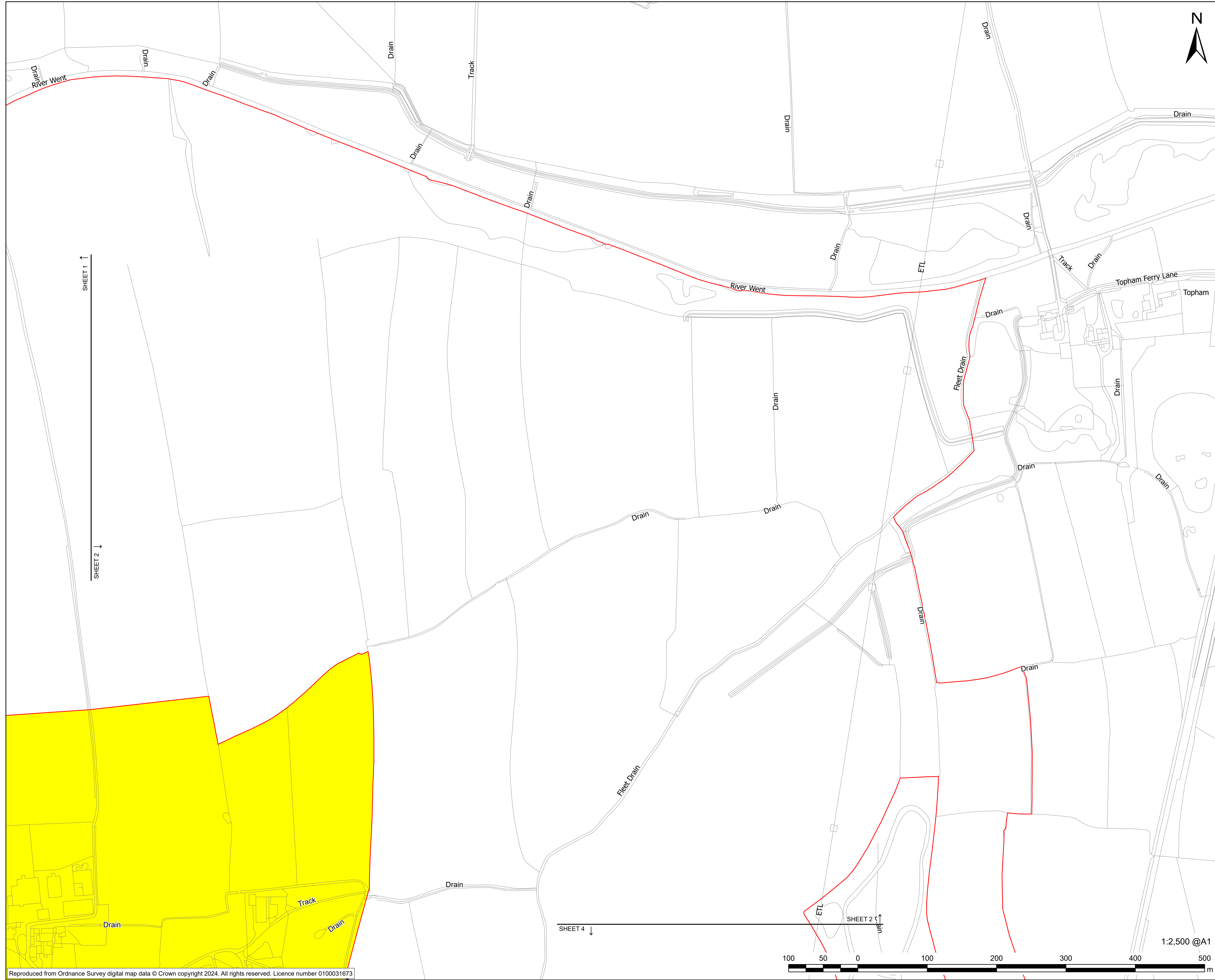
**PLAN TITLE**  
 Location Plan - Sheet 1 of 11

**REFERENCE NUMBER**  
 EN10152/APP/2.5

**LEGISLATION REFERENCE**  
 APFP 2009 Regulation 5(2)(o)

This drawing has been prepared for the use of AECOM's client. It may not be used, modified, reproduced or relied upon by third parties, except as agreed by AECOM or as required by law. AECOM accepts no responsibility, and denies any liability whatsoever, to any party that uses or relies on this drawing without AECOM's express written consent. Do not scale this document. All measurements must be obtained from the stated dimensions.





FOR DCO APPLICATION	AK	JW	24/09/2024	0
REVISION DETAILS	BY	CHECK	DATE	REV

**ISSUE PURPOSE**  
DCO Application

**PROJECT NUMBER**  
60698207

**PLAN TITLE**  
Location Plan - Sheet 2 of 11

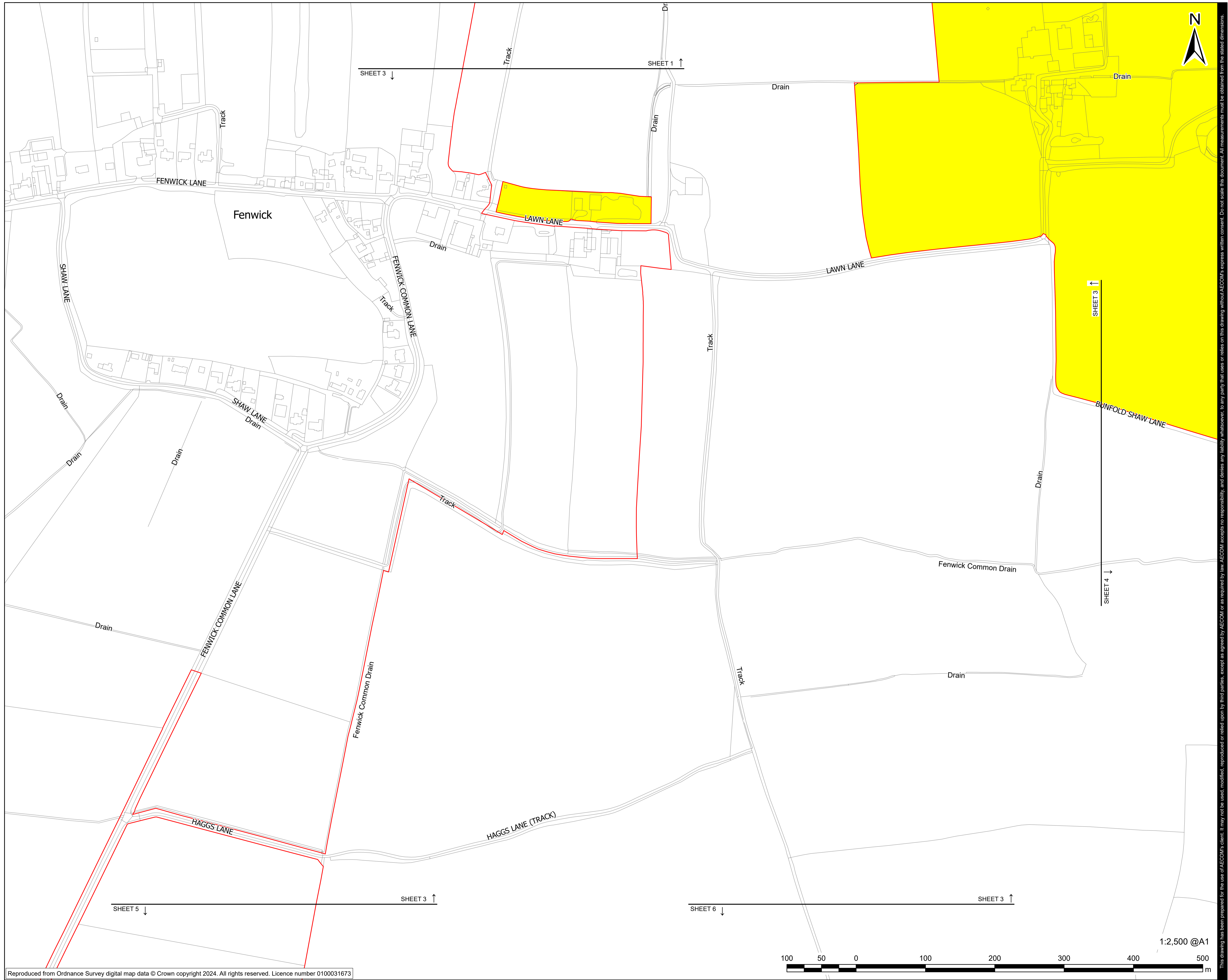
**REFERENCE NUMBER**  
EN10152/APP/2.5

**LEGISLATION REFERENCE**  
APFP 2009 Regulation 5(2)(o)

This drawing has been prepared for the use of AECOM's client. It may not be used, modified, reproduced or relied upon by third parties, except as agreed by AECOM or as required by AECOM to accept no responsibility, and denies any liability whatsoever, to any party that uses or relies on this drawing without AECOM's express written consent. Do not scale this document. All measurements must be obtained from the stated dimensions.







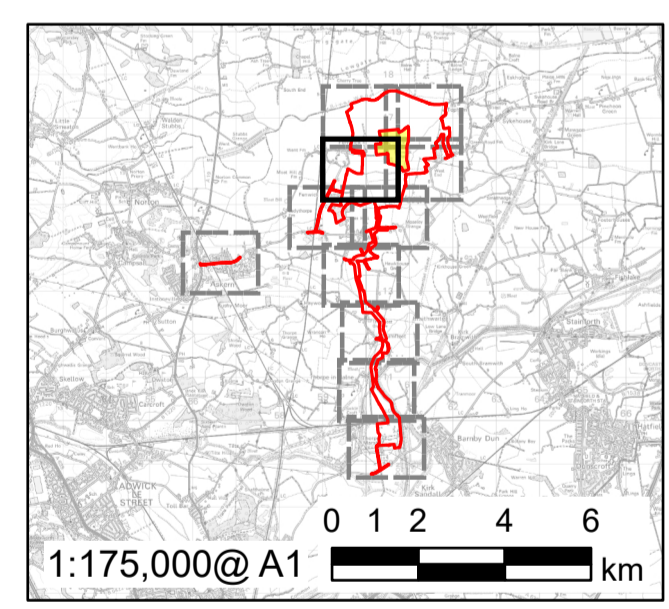
**PROJECT**  
 Fenwick Solar Farm

**CLIENT**  
 Fenwick Solar Project Limited

**CONSULTANT**  
 AECOM Limited  
 Midpoint  
 Alencon Link  
 Basingstoke, RG21 7PP  
 www.aecom.com

**LEGEND**

- Order limits
- Land not included in the Order limits



FOR DCO APPLICATION			
AK	JW	24/09/2024	0
REVISION DETAILS			
BY	DATE	REV	
CHECK			

**ISSUE PURPOSE**  
 DCO Application

**PROJECT NUMBER**  
 60698207

**PLAN TITLE**  
 Location Plan - Sheet 3 of 11

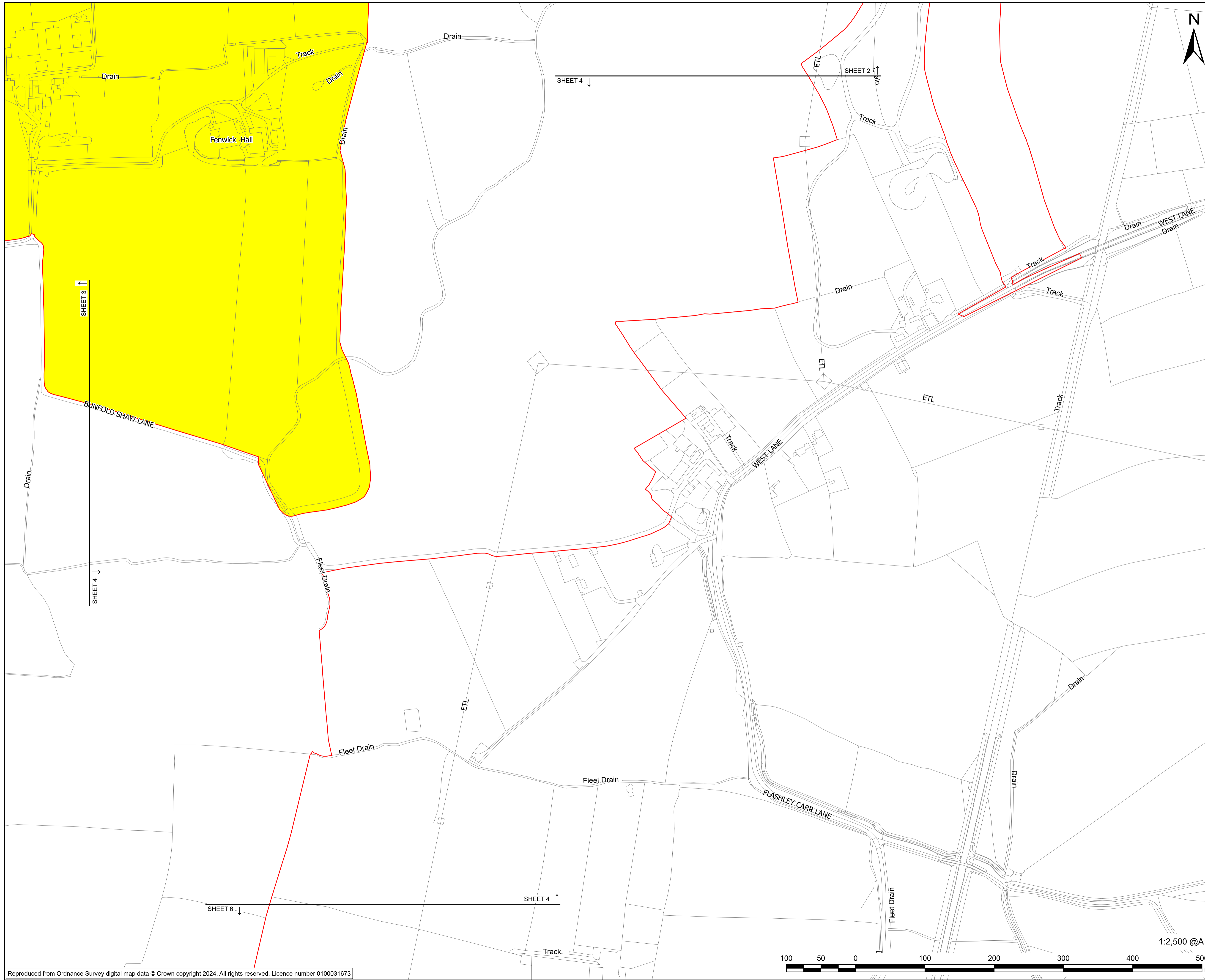
**REFERENCE NUMBER**  
 EN010152/APP/2.5

**LEGISLATION REFERENCE**  
 APFP 2009 Regulation 5(2)(o)



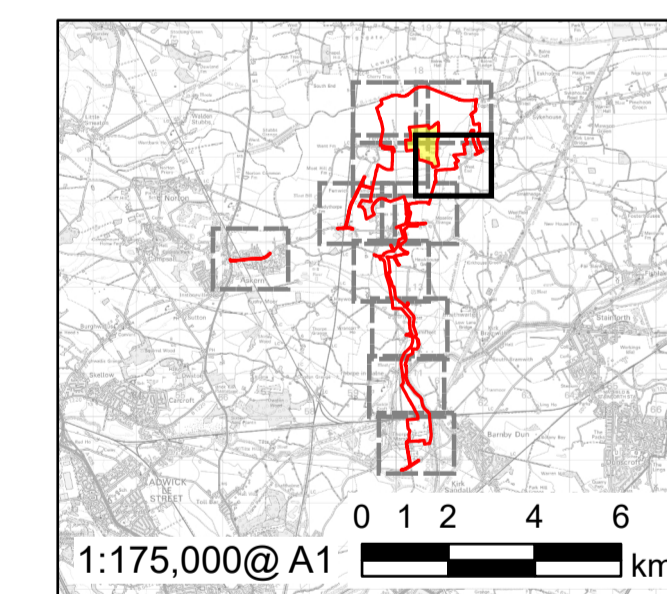
This drawing has been prepared for the use of AECOM's client. It may not be used, modified, reproduced or relied upon by third parties, except as agreed by AECOM or as required by AECOM, and AECOM accepts no responsibility, and denies any liability whatsoever, to any party that uses or relies on this drawing without AECOM's express written consent. Do not scale this document. All measurements must be obtained from the stated dimensions.





**LEGEND**

	Order limits
	Land not included in the Order limits



FOR DCO APPLICATION	AK	JW	24/09/2024	0
REVISION DETAILS	BY	CHECK	DATE	REV

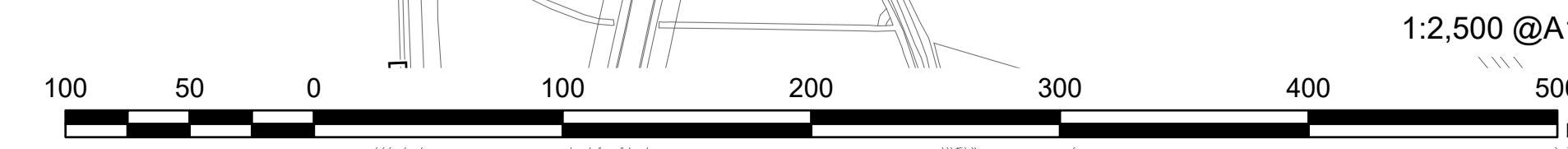
**ISSUE PURPOSE**  
DCO Application

**PROJECT NUMBER**  
60698207

**PLAN TITLE**  
Location Plan - Sheet 4 of 11

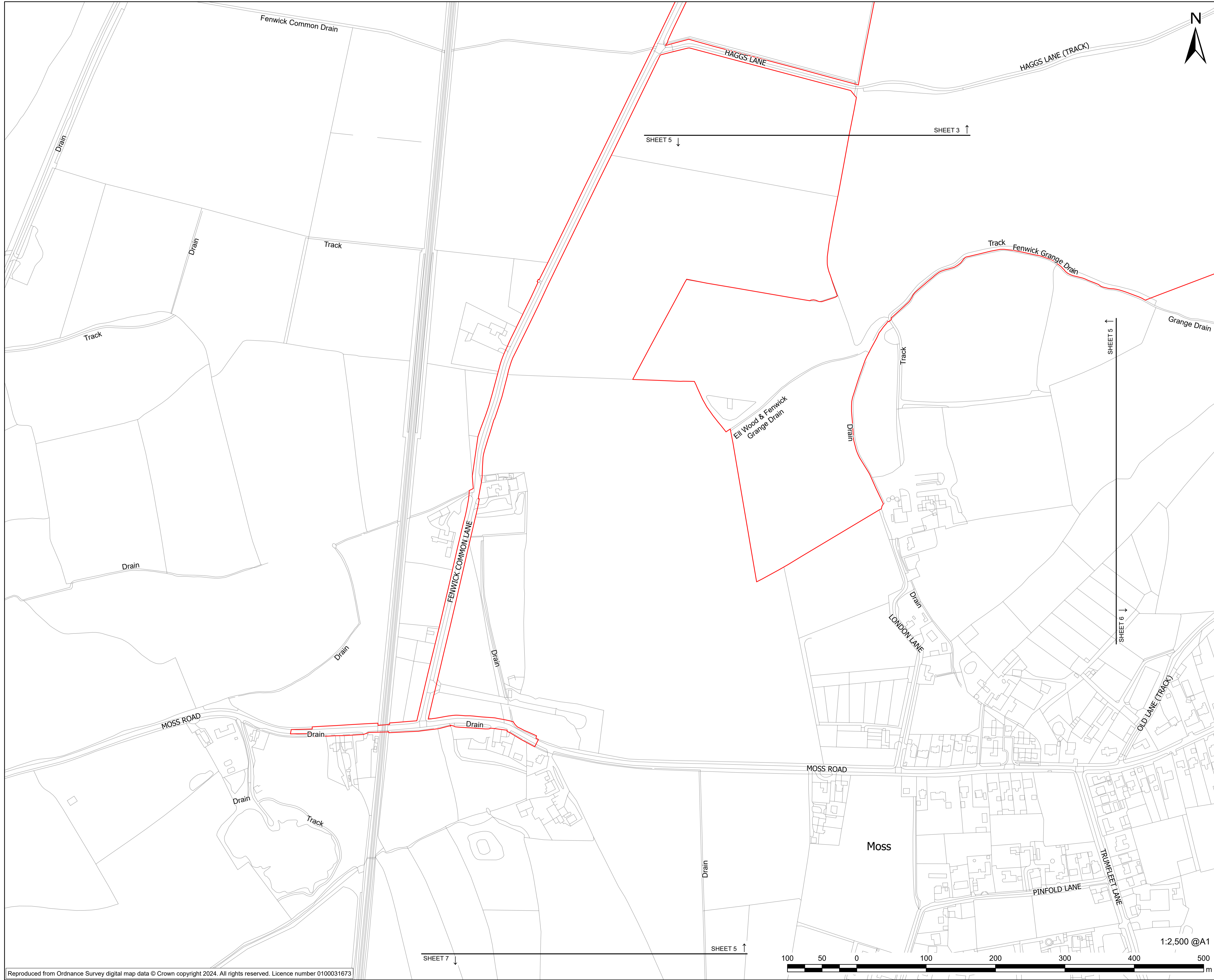
**REFERENCE NUMBER**  
EN10152/APP/2.5

**LEGISLATION REFERENCE**  
APFP 2009 Regulation 5(2)(o)



This drawing has been prepared for the use of AECOM's client. It may not be used, modified, reproduced or relied upon by third parties, except as agreed by AECOM or as required by AECOM, and AECOM accepts no responsibility, and denies any liability whatsoever, to any party that uses or relies on this drawing without AECOM's express written consent. Do not scale this document. All measurements must be obtained from the stated dimensions.





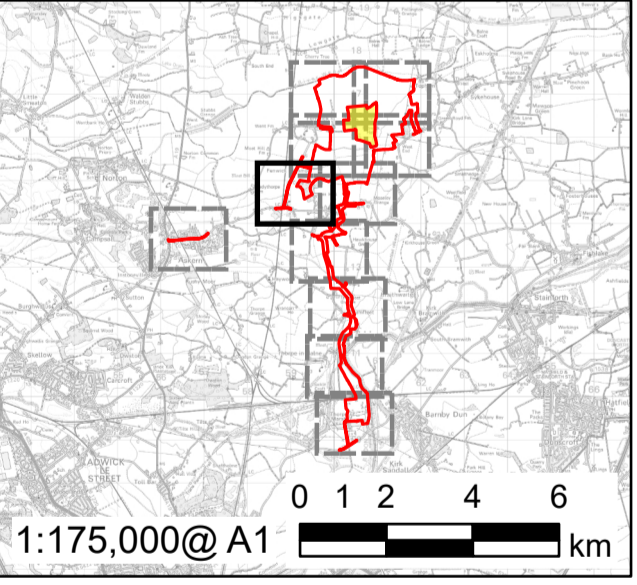
**PROJECT**  
Fenwick Solar Farm

**CLIENT**  
Fenwick Solar Project Limited

**CONSULTANT**  
AECOM Limited  
Midpoint  
Alencon Link  
Basingstoke, RG21 7PP  
www.aecom.com

**LEGEND**

- Order limits
- Land not included in the Order limits



FOR DCO APPLICATION	AK	JW	24/09/2024	0
REVISION DETAILS	BY	CHECK	DATE	REV

**ISSUE PURPOSE**  
DCO Application

**PROJECT NUMBER**  
60698207

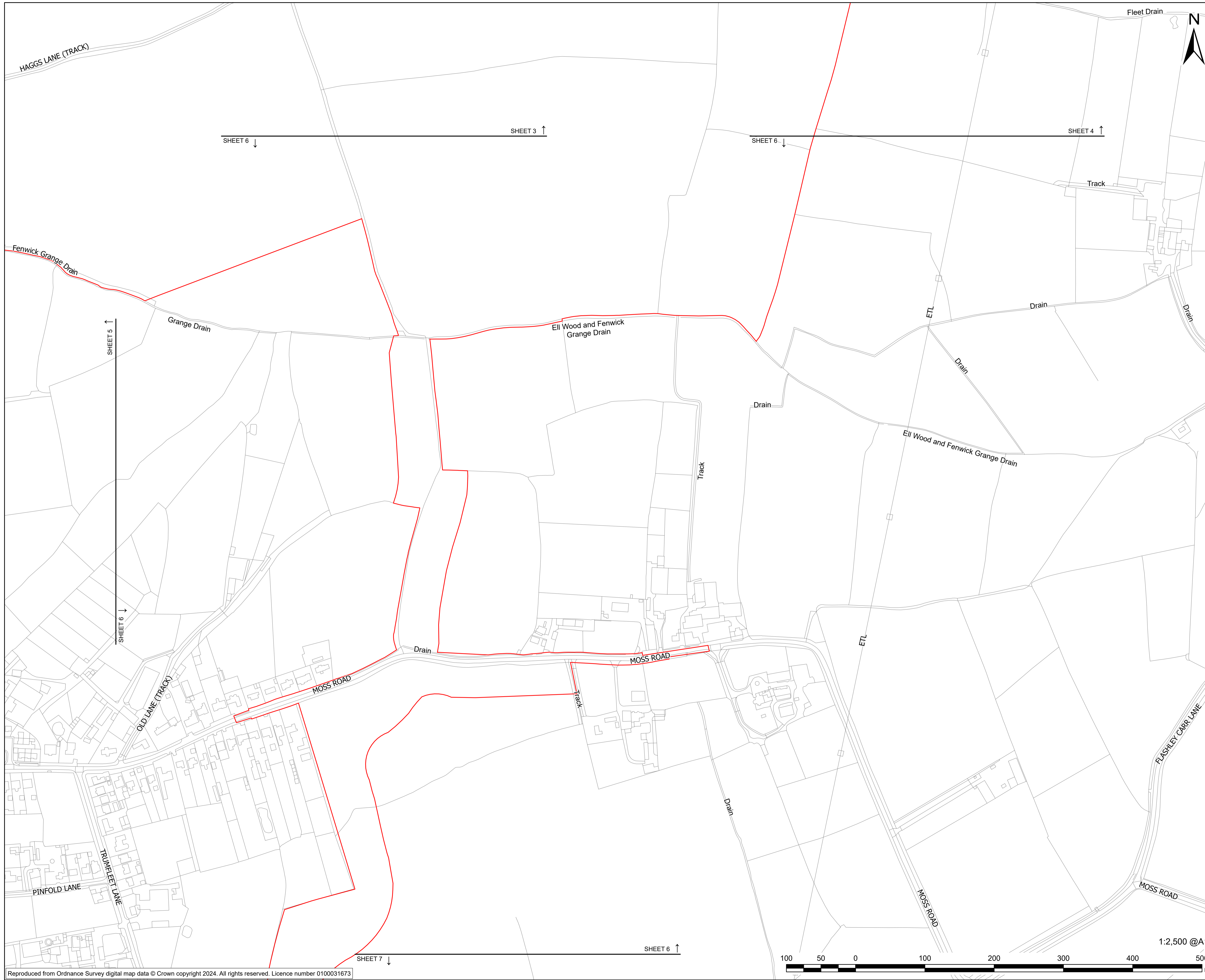
**PLAN TITLE**  
Location Plan - Sheet 5 of 11

**REFERENCE NUMBER**  
EN010152/APP/2.5

**LEGISLATION REFERENCE**  
APFP 2009 Regulation 5(2)(o)

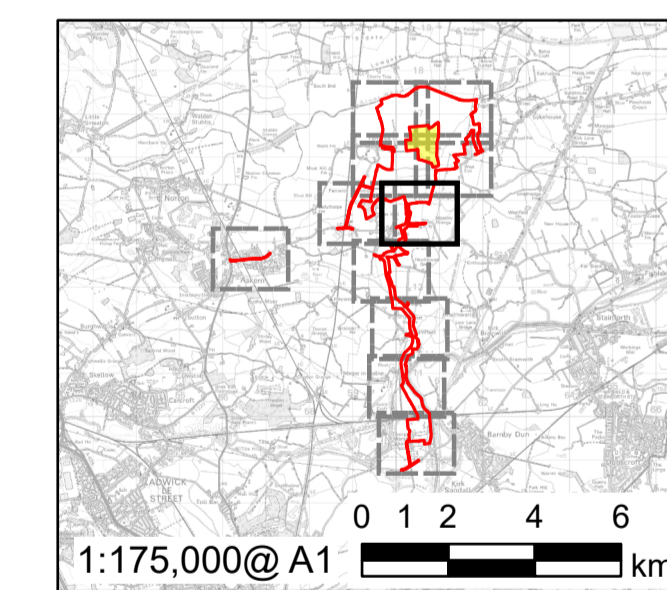
This drawing has been prepared for the use of AECOM's client. It may not be used, modified, reproduced or relied upon by third parties, except as agreed by AECOM or as required by law. AECOM accepts no responsibility, and denies any liability whatsoever, to any party that uses or relies on this drawing without AECOM's express written consent. Do not scale this document. All measurements must be obtained from the stated dimensions.





**LEGEND**

<span style="border: 1px solid red; display: inline-block; width: 15px; height: 10px;"></span>	Order limits
<span style="background-color: yellow; display: inline-block; width: 15px; height: 10px;"></span>	Land not included in the Order limits



FOR DCO APPLICATION	AK	JW	24/09/2024	0
REVISION DETAILS	BY	CHECK	DATE	REV

**ISSUE PURPOSE**

DCO Application

**PROJECT NUMBER**

60698207

**PLAN TITLE**

Location Plan - Sheet 6 of 11

**REFERENCE NUMBER**

EN10152/APP/2.5

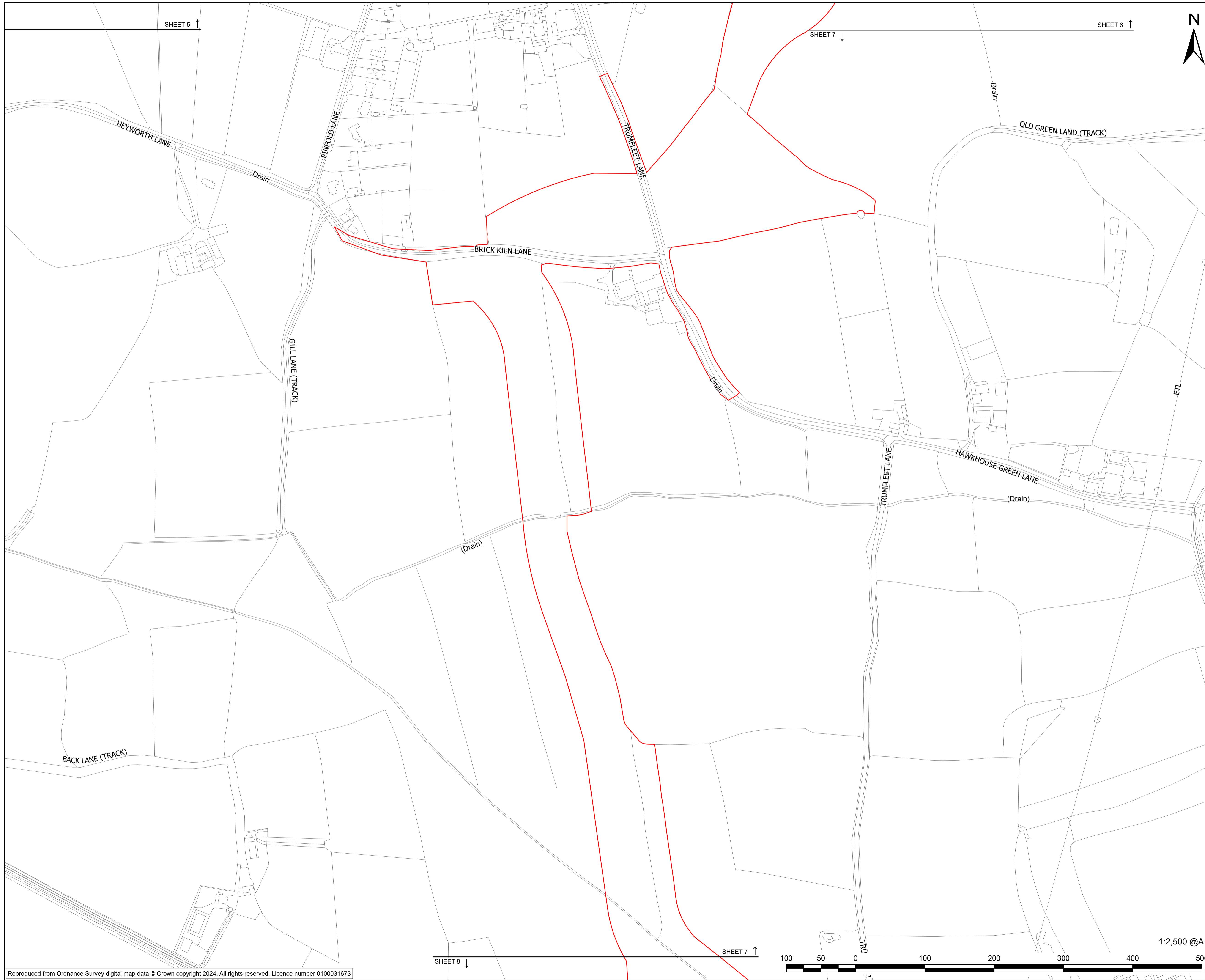
**LEGISLATION REFERENCE**

APFP 2009 Regulation 5(2)(o)

This drawing has been prepared for the use of AECOM's client. It may not be used, modified, reproduced or relied upon by third parties, except as agreed by AECOM or as required by law. AECOM accepts no responsibility, and denies any liability whatsoever, to any party that uses or relies on this drawing without AECOM's express written consent. Do not scale this document. All measurements must be obtained from the stated dimensions.







**PROJECT**

Fenwick Solar Farm

**CLIENT**

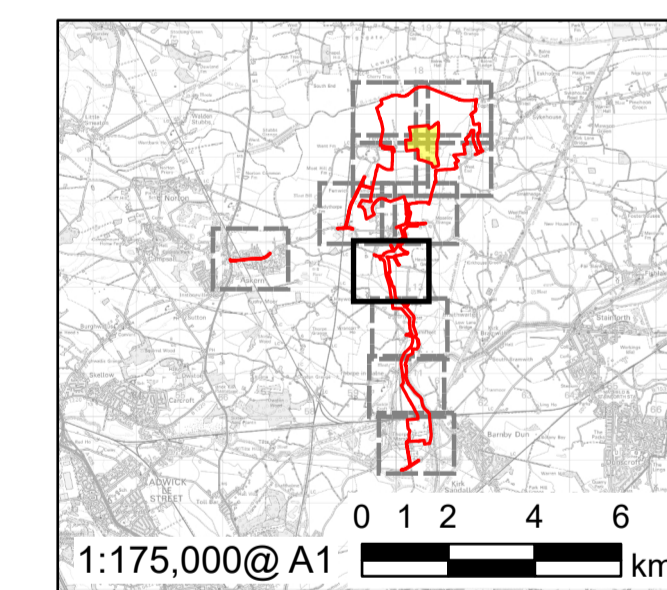
Fenwick Solar Project Limited

**CONSULTANT**

AECOM Limited  
 Midpoint  
 Alencon Link  
 Basingstoke, RG21 7PP  
 www.aecom.com

**LEGEND**

- Order limits
- Land not included in the Order limits



FOR DCO APPLICATION	AK	JW	24/09/2024	0
REVISION DETAILS	BY	CHECK	DATE	REV

**ISSUE PURPOSE**

DCO Application

**PROJECT NUMBER**

60698207

**PLAN TITLE**

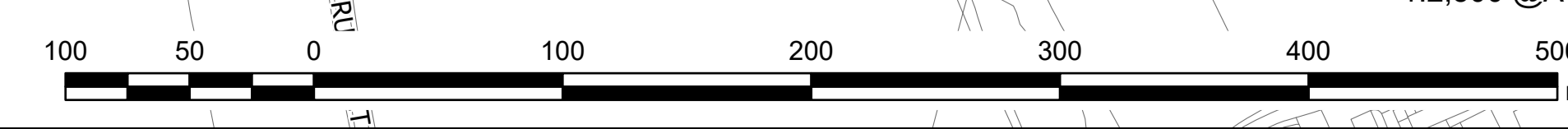
Location Plan - Sheet 7 of 11

**REFERENCE NUMBER**

EN10152/APP/2.5

**LEGISLATION REFERENCE**

APFP 2009 Regulation 5(2)(o)



This drawing has been prepared for the use of AECOM's client. It may not be used, modified, reproduced or relied upon by third parties, except as agreed by AECOM or as required by AECOM, and AECOM accepts no responsibility, and denies any liability whatsoever, to any party that uses or relies on this drawing without AECOM's express written consent. Do not scale this document. All measurements must be obtained from the stated dimensions.





**PROJECT**

Fenwick Solar Farm

**CLIENT**

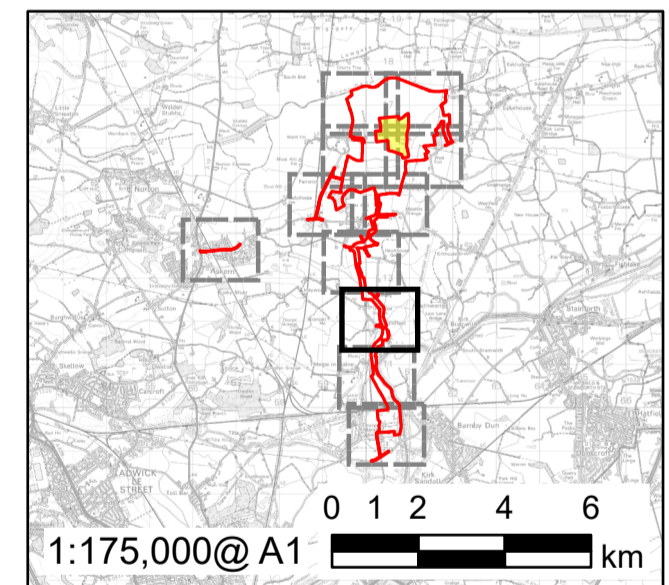
Fenwick Solar Project Limited

**CONSULTANT**

AECOM Limited  
Midpoint  
Alencon Link  
Basingstoke, RG21 7PP  
www.aecom.com

**LEGEND**

- Order limits
- Land not included in the Order limits



FOR DCO APPLICATION	AK	JW	24/09/2024	0
REVISION DETAILS	BY	CHECK	DATE	REV

**ISSUE PURPOSE**

DCO Application

**PROJECT NUMBER**

60698207

**PLAN TITLE**

Location Plan - Sheet 8 of 11

**REFERENCE NUMBER**

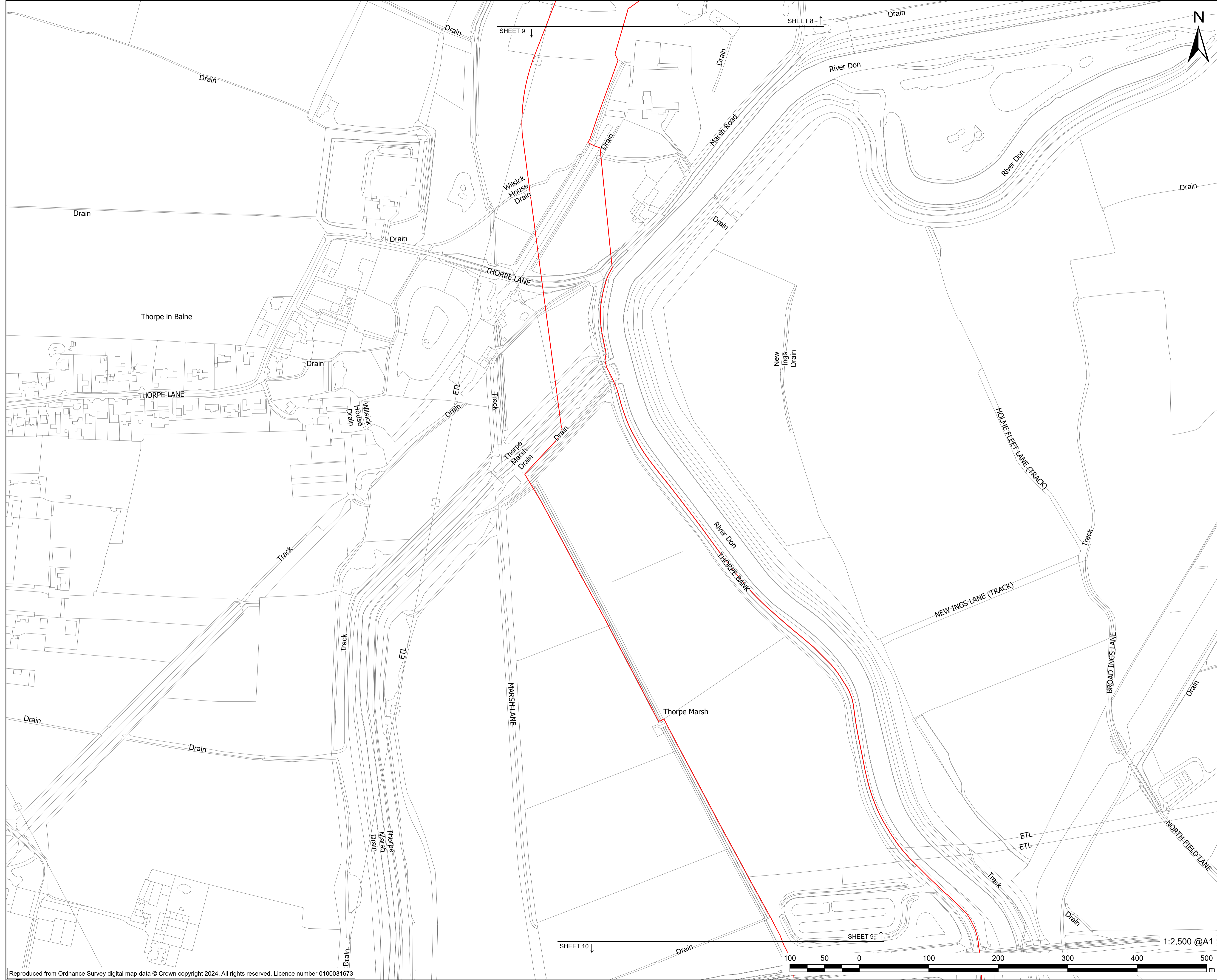
EN010152/APP/2.5

**LEGISLATION REFERENCE**

APFP 2009 Regulation 5(2)(o)

This drawing has been prepared for the use of AECOM's client. It may not be used, modified, reproduced or relied upon by third parties, except as agreed by AECOM or as required by AECOM or as required by law. AECOM accepts no responsibility, and denies any liability whatsoever, to any party that uses or relies on this drawing without AECOM's express written consent. Do not scale this document. All measurements must be obtained from the stated dimensions.





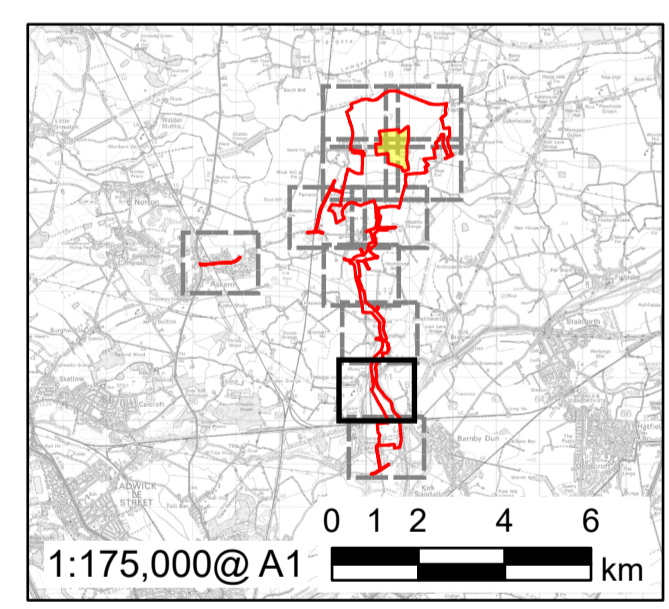
**PROJECT**  
Fenwick Solar Farm

**CLIENT**  
Fenwick Solar Project Limited

**CONSULTANT**  
AECOM Limited  
Midpoint  
Alencon Link  
Basingstoke, RG21 7PP  
www.aecom.com

**LEGEND**

- Order limits
- Land not included in the Order limits



FOR DCO APPLICATION	AK	JW	24/09/2024	0
REVISION DETAILS	BY	CHECK	DATE	REV

**ISSUE PURPOSE**  
DCO Application

**PROJECT NUMBER**  
60698207

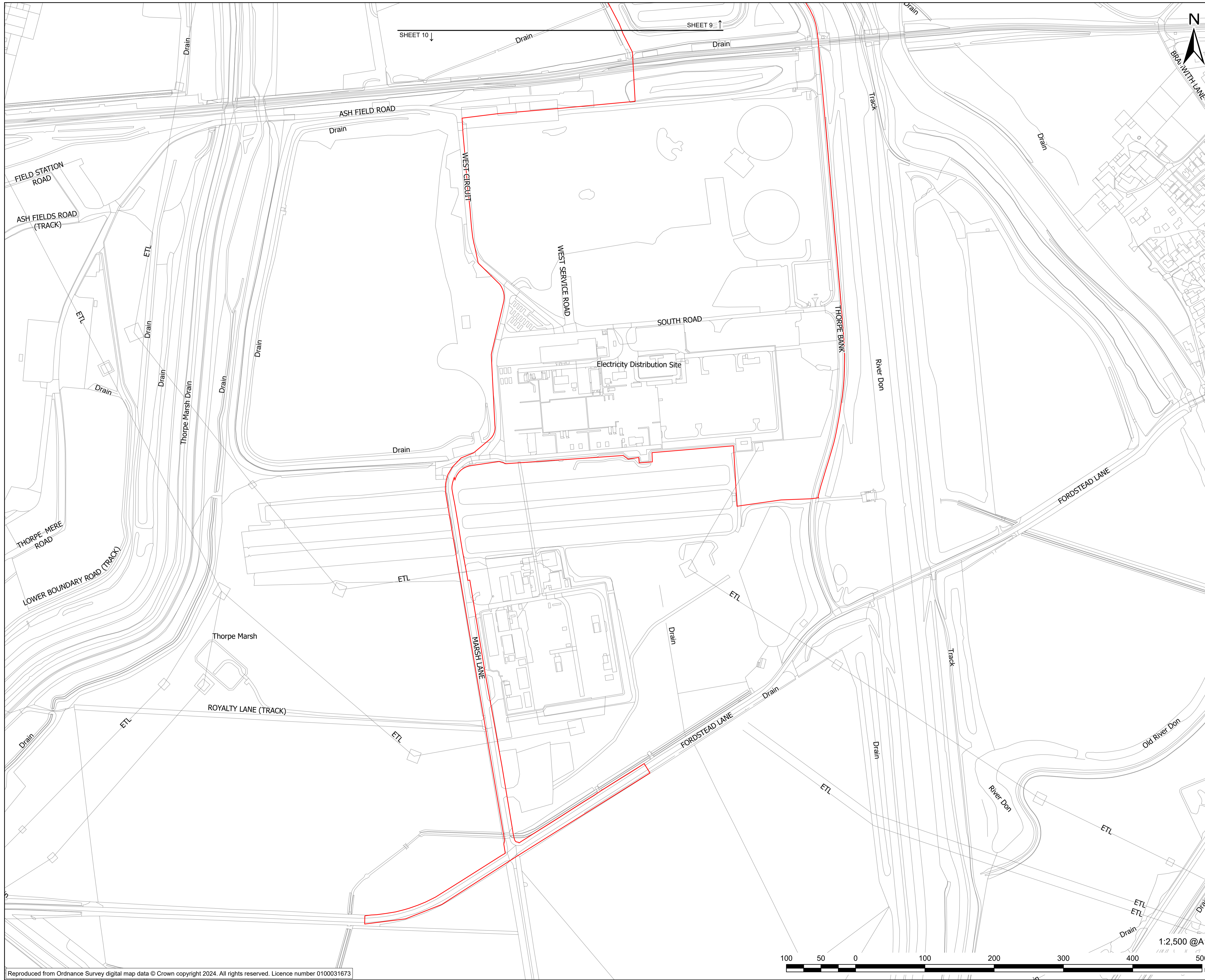
**PLAN TITLE**  
Location Plan - Sheet 9 of 11

**REFERENCE NUMBER**  
EN10152/APP/2.5

**LEGISLATION REFERENCE**  
APFP 2009 Regulation 5(2)(o)

This drawing has been prepared for the use of AECOM's client. It may not be used, modified, reproduced or relied upon by third parties, except as agreed by AECOM or as required by law. AECOM accepts no responsibility, and denies any liability whatsoever, to any party that uses or relies on this drawing without AECOM's express written consent. Do not scale this document. All measurements must be obtained from the stated dimensions.





This drawing has been prepared for the use of AECOM's client. It may not be used, modified, reproduced or relied upon by third parties, except as agreed by AECOM or as required by law. AECOM accepts no responsibility, and denies any liability whatsoever, to any party that uses or relies on this drawing without AECOM's express written consent. Do not scale this document. All measurements must be obtained from the stated dimensions.



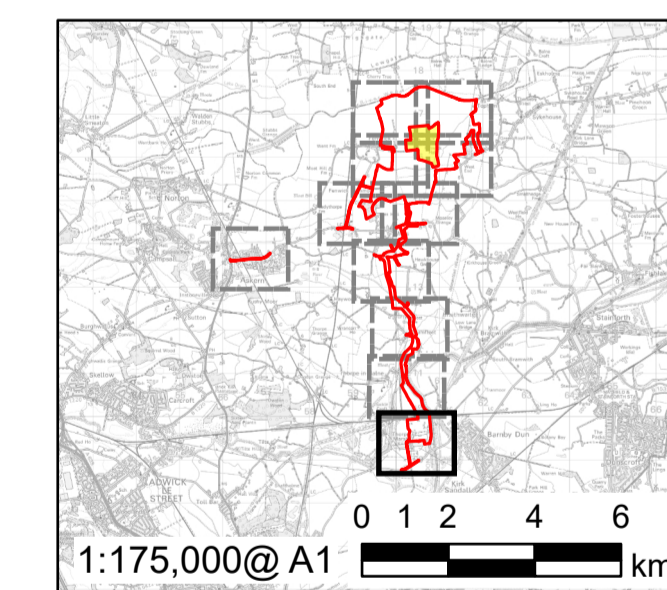
**PROJECT**  
Fenwick Solar Farm

**CLIENT**  
Fenwick Solar Project Limited

**CONSULTANT**  
AECOM Limited  
Midpoint  
Alencon Link  
Basingstoke, RG21 7PP  
www.aecom.com

**LEGEND**

- Order limits
- Land not included in the Order limits



FOR DCO APPLICATION	AK	JW	24/09/2024	0
REVISION DETAILS	BY	CHECK	DATE	REV

**ISSUE PURPOSE**

DCO Application

**PROJECT NUMBER**

60698207

**PLAN TITLE**

Location Plan - Sheet 10 of 11

**REFERENCE NUMBER**

EN10152/APP/2.5

**LEGISLATION REFERENCE**

APFP 2009 Regulation 5(2)(o)







**AECOM**

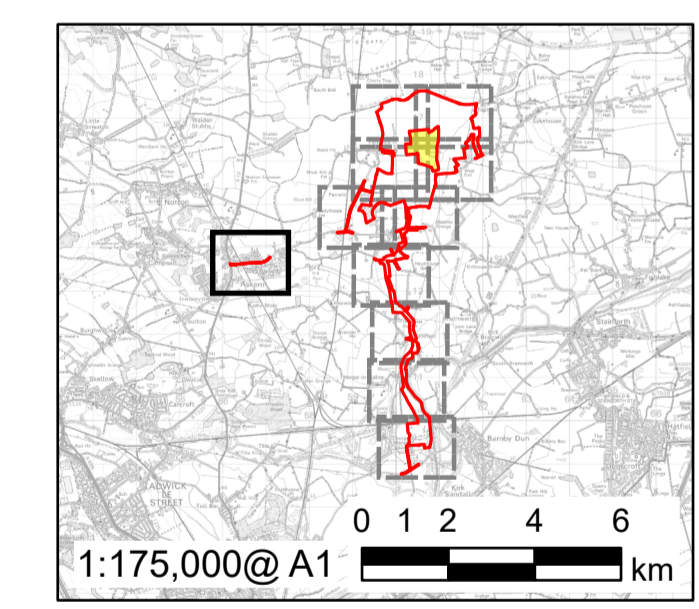
**PROJECT**  
 Fenwick Solar Farm

**CLIENT**  
 Fenwick Solar Project Limited

**CONSULTANT**  
 AECOM Limited  
 Midpoint  
 Alencon Link  
 Basingstoke, RG21 7PP  
 www.aecom.com

**LEGEND**

- Order limits
- Land not included in the Order limits



FOR DCO APPLICATION	AK	JW	24/09/2024	0
REVISION DETAILS	BY	CHECK	DATE	REV

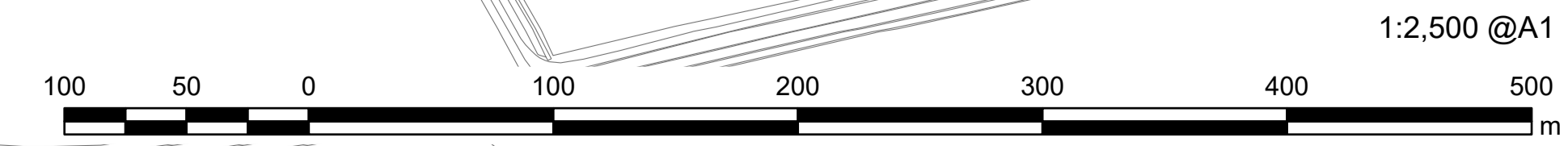
**ISSUE PURPOSE**  
 DCO Application

**PROJECT NUMBER**  
 60698207

**PLAN TITLE**  
 Location Plan - Sheet 11 of 11

**REFERENCE NUMBER**  
 EN10152/APP/2.5

**LEGISLATION REFERENCE**  
 APFP 2009 Regulation 5(2)(o)



This drawing has been prepared for the use of AECOM's client. It may not be used, modified, reproduced or relied upon by third parties, except as agreed by AECOM or as required by law. AECOM accepts no responsibility, and denies any liability whatsoever, to any party that uses or relies on this drawing without AECOM's express written consent. Do not scale this document. All measurements must be obtained from the stated dimensions.